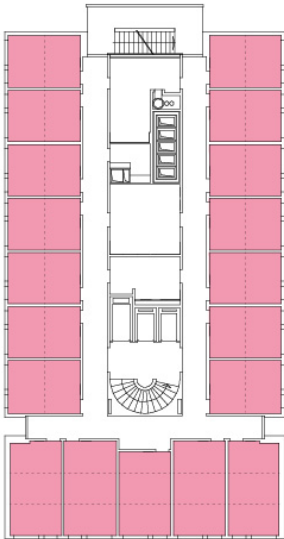


Type 08

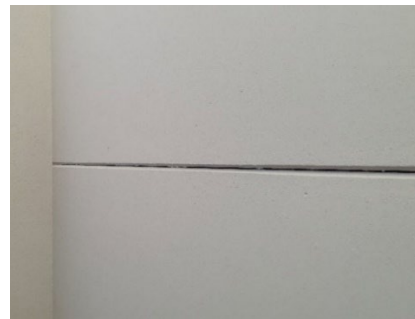
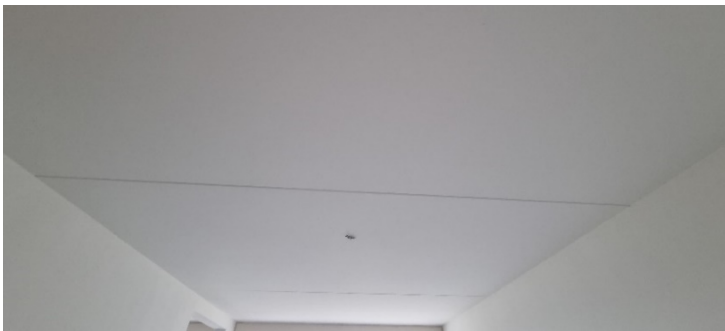
Category: Slab elements

Prelam slabs with cast-in-place overlay

Location



Prelam slabs with cast-in-place overlay



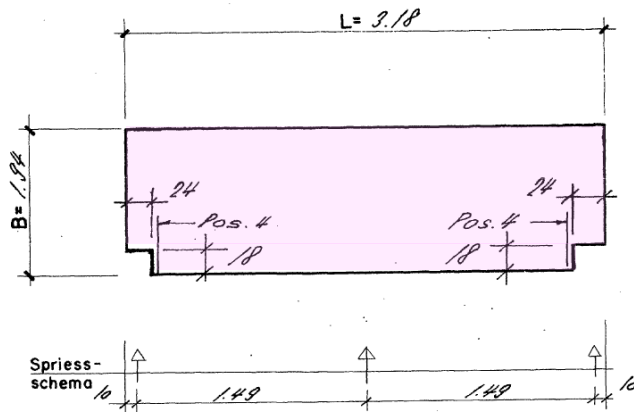
Type 08

Category: Slab elements

Prelam slabs with cast-in-place overlay

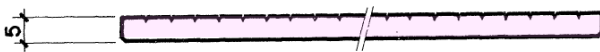
Subtype n° 50, dimensions

1:50



Subtype n°50, cross-section (only prelam slab)

1:50



Type 08

Category: Slab elements

Prelam slabs with cast-in-place overlay

Description				Condition and durability	
Exposition	Inside, not exposed			Condition assessment	100% good
Color	n.a			Carbonatation depth [mm]	< 1,0
Finishing	White paint on the bottom side			Toxic substance	asbestos
Actual location	Floor 2 nd to 13 th			Mechanical characteristics	
Initial function	Slab load-bearing element			Density	2500 kg/m ³
Accessibility	Difficult – three & more elements to dismantle before			Concrete compressive strength	25 N/mm ²
Anchor points	Not available			Concrete young modulus	33'800 N/mm ²
Overlays	Type	Fixation	Thickness	Reinforcement tensile strength	450 N/mm ²
	Screed	-	50 mm	Reinforcement young modulus	205'000 N/mm ²
Connexion type	Prelams connected through cast-in-place overlay.				
	Prelams connected to wall				
Deconstruction tool	Diamond saw				

Element	Geometry			Inventory					Environmental impacts	
	Dimensions (W x L x T) [mm]	Reinforcement [mm]	Cross-section resistance [kNm]	Quantity [u]	Weight [kg/u]	Total area [m ²]	Total volume [m ³]	Significance	Initial production [kgCO ₂ -eq/u]	Conventional demolition [kgCO ₂ -eq/u]
50, 51	1940 x 3180 x 160	14 x Ø 5	13,0	180	2468	1110,5	178	2,9 %	220	25
52	1780 x 3180 x 160	13 x Ø 5	12,1	66	2264	373,6	59,8	1,0 %	202	23
55 to 57	2200 x 3140 x 160	16 x Ø 5	14,9	792	1507	5471	875,4	14,2 %	134	15
58	1940 x 3250 x 160	14 x Ø 5	13,0	72	2522	454,0	72,6	1,2 %	224	25
61, 64, 65	2200 x 3250 x 160	16 x Ø 5	14,9	72	2860	514,8	82,4	1,3 %	255	29

Additional information

Additional note	>	The cores to determine the strength of the concrete, included the prelam slab and the cast-in-place overlay. Their strength is estimated to be similar and the bond between the layers is assumed to be good.
Attention point	>	Asbestos may be present in the glue for laminate flooring.