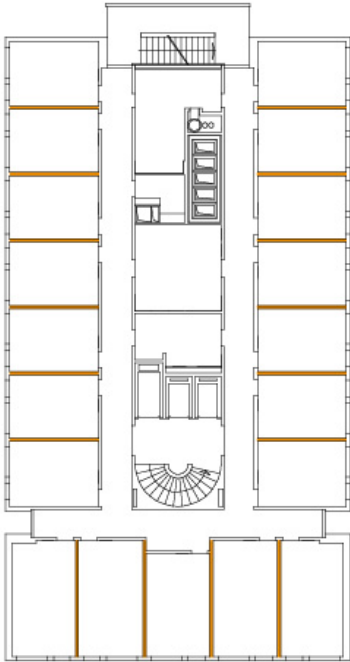


Type 10

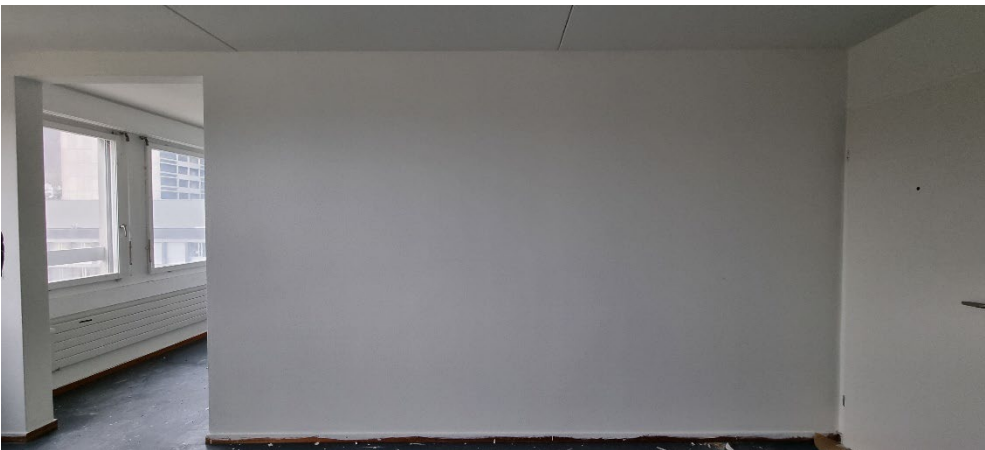
Category: Wall elements

Preton walls

Location



Preton wall

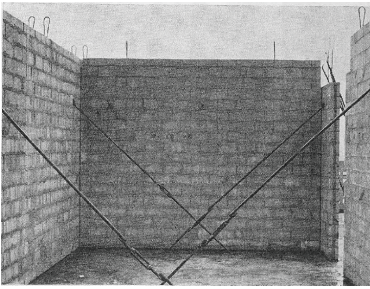
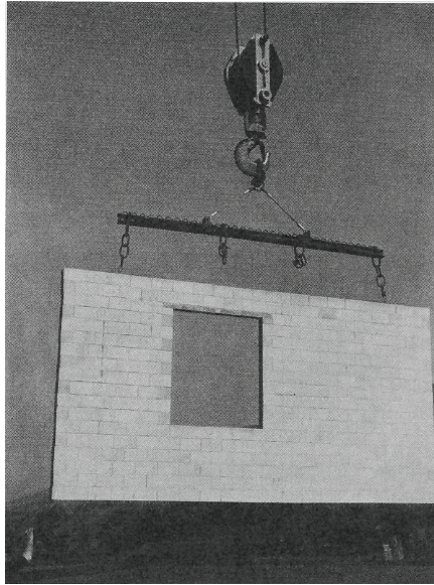
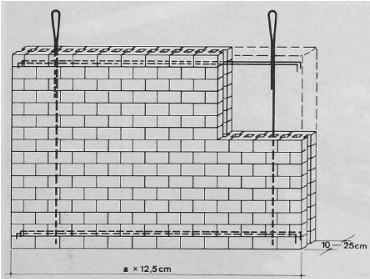


Type 10

Category: Wall elements

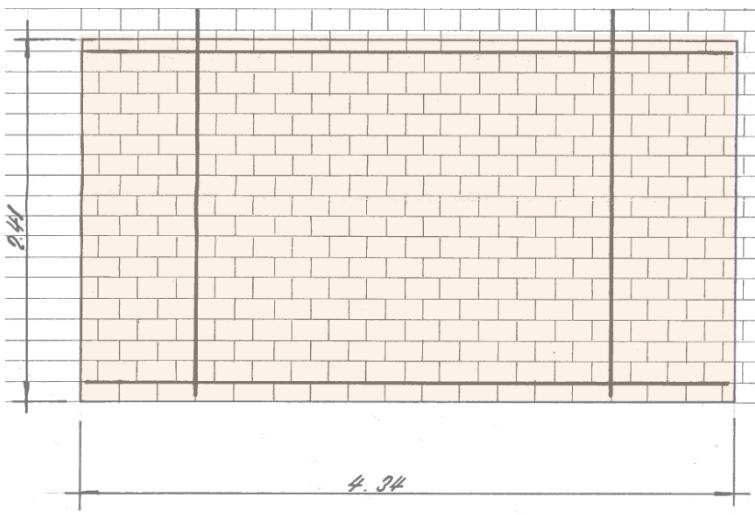
Preton walls

Preton wall



Subtype n° 82, dimensions

1:50



Type 10

Category: Wall elements

Preton walls

Description				Condition and durability	
Exposition	Inside, not exposed			Condition assessment	n.a. (prob. good)
Color	n.a.			Carbonatation depth	n.a.
Finishing	n.a.			Toxic substance	None
Actual location	Floor 2 nd to 13 th			Mechanical characteristics	
Initial function	Wall load-bearing element			Density	900 kg/m ³
Accessibility	Difficult – three & more elements to dismantle before			Masonry compressive strength	n.a. N/mm ²
Anchor points	Not available			Masonry young modulus	n.a. N/mm ²
Overlays	Type	Fixation	Thickness	Reinforcement tensile strength	450 N/mm ²
	Wallpaper	Glued	-	Reinforcement young modulus	205'000 N/mm ²
Connexion type	Mortar bed				
Deconstruction tool	Saw				

Element	Geometry			Inventory					Environmental impacts	
	Dimensions (W x L x T) [mm]	Reinforcement [mm]	Cross-section resistance [kNm]	Quantity [m ²]	Weight [kg/u]	Total area [m ²]	Total volume [m ³]	Significance	Initial production [kgCO ₂ -eq/u]	Conventional demolition [kgCO ₂ -eq/u]
81, 82	4340 x 2410 x 150	Ø 14	n.a.	396	1412	4141,9	621	8,9%	352	13
83	4500 x 2410 x 150	Ø 14	n.a.	66	1464	715,8	107	1,5%	365	13
84, 85, 87 to 89	5600 x 2410 x 150	Ø 14	n.a.	102	1822	1376,6	207	3,0%	454	16
86	3890 x 2410 x 150	Ø 12	n.a.	30	1266	281,2	42,2	0,6%	315	11
108, 109	4340 x 2820 x 150	Ø 14	n.a.	36	1652	440,6	66,1	1,0%	411	15
110	4500 x 2820 x 150	Ø 14	n.a.	6	1713	76,1	11,4	0,2%	427	15
111	3890 x 2820 x 150	Ø 12	n.a.	6	1481	65,8	9,9	0,1%	369	13
112, 113	5600 x 2820 x 150	Ø 14	n.a.	6	2132	94,8	14,2	0,2%	531	19

Additional information

Additional note

- > See historical paper on prefabricated masonry wall [20].
- > The condition of these walls could not be assessed as they were covered by wallpaper. However, it is assumed to be good.

Attention point

-